

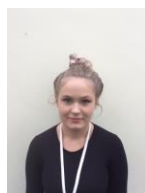
Foxglove Class  
Autumn term 2 Newsletter  
2022-2023



Foxglove Class Staff



Rachel



Karis



Jay

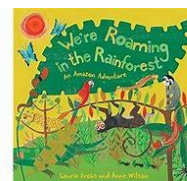


Owen

Welcome

We hope you have had a good week off. Just a reminder that this term tends to be a wet and cold one so please can coats and waterproofs be sent in every day as we try to get outside whatever the weather. We will keep you updated about all we are doing via Tapestry so please check regularly.

This term our book is...



Curriculum

This term our topic is 'Rumble in the jungle'.

In communication and language, we will be exploring poetry, rhyming and riddles. In cognition and learning, we will be concentrating on place value and time.

We will continue with weekly cooking sessions, drama/music sessions, and PE. We will be visiting the 4D room for some immersive learning. We will also continue our Skillsbuilder lessons concentrating on teambuilding.

Our focus in PSHE this term, will be who are trusted adults are, what we share with people and stranger danger.

Towards the end of the term we will enter into everything Christmas and this will no doubt involve lots of glitter!

Whole School Diary Dates

18/11/2022	Children in Need – Spotacular
06/12/2022	Upper School Christmas Performance 13:30 – 14:30
08/12/2022	Save the Children Christmas Jumper Day £1 donation
08/12/2022	Ideal School Meals Christmas lunch
09/12/2022	Lower School Christmas Nativity 09:30 – 10:15
09/12/2022	Coffee Morning for parents/carers – Sleep Talker
16/12/2022	Christmas jumper day
16/12/2022	End of Term
04/01/2023	Start of Term

Please send £1 a week or £6 for the term in a named envelope to cover the cost of ingredients for food lessons.

Key Class information

Please send in any snacks/ drinks for your child.

Monday	PE
Wednesday	Forest school Spa for boys
Thursday	Spa for girls
Friday	Bourne Woods

Please ensure you send in clothing and footwear suitable for the above activities.

Keeping in touch

Please continue to use the home school book or Tapestry to inform us of any important information relating to your child. We will check it every day but please log into Tapestry for your daily class update. Don't forget to add any home experiences to Tapestry as this provides us with a valuable link to home.

Any absence or to notify us of a medical appointment please email: [willoughbypastoral@prioryacademies.co.uk](mailto:willoughbypastoral@prioryacademies.co.uk)

Any general enquiries please email: [willoughbyenquiries@prioryacademies.co.uk](mailto:willoughbyenquiries@prioryacademies.co.uk)