

Foxglove Class  
Spring term 2 Newsletter  
2022-2023



**Foxglove Class Staff**



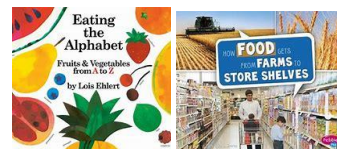
Rachel Sally Karis Jay Michelle Holly

Welcome

Hope you have all had a good week off.

Owen has moved to a different class, so this term we welcome Holly to Foxglove class.

This term our books are...



Curriculum

This term our topic is 'How does your garden grow?'.

In Communication and Language, we will be exploring non-fiction using two books 'Eating the alphabet' and 'How food gets from farms to store shelves'. We will make our own fact files. In Cognition and Learning, we will be concentrating on addition and subtraction as well as shape. We have a busy term ahead, including World Book Day, Science Week and Careers Week.

Our weekly cooking sessions, performing arts, and PE sessions will continue. We will be visiting the 4D room for some immersive learning, along with the continuation of our Skillsbuilder lessons on listening.

Our focus in PSHE this term, will be learning about our bodies and consent.

We will continue to have our forest school sessions and weekly visit to the woods.

Whole School Diary Dates

02/03/2023	World Book Day
06/03/2023	Careers Week
08/03/2023	Parents' Evening
13/03/2023	Science Week
17/03/2023	Futures Fayre
17/03/2023	Comic Relief
31/03/2023	Easter Raffle Draw
31/03/2023	End of Term
17/04/2023	Start of Term

Please send £1.50 a week or £9 for the term in a named envelope to cover the cost of ingredients for food lessons.

Key Class information

Please send in any snacks/ drinks for your child.

Please ensure you send in clothing and footwear suitable for forest school and the woods.

Keeping in touch

Please continue to use the home school book or Tapestry to inform us of any important information relating to your child. We will check it every day but please log into Tapestry for your daily class update. Don't forget to add any home experiences to Tapestry as this provides us with a valuable link to home.

Any absence or to notify us of a medical appointment or for general enquiries please email:  
[willoughbyenquiries@prioryacademies.co.uk](mailto:willoughbyenquiries@prioryacademies.co.uk)