

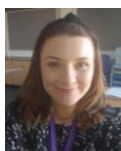
## Daffodil Class

### Summer 2 Newsletter

2022 - 2023



## Daffodil Class Staff



Amy



Laura



Nic



Josie



Jasmine

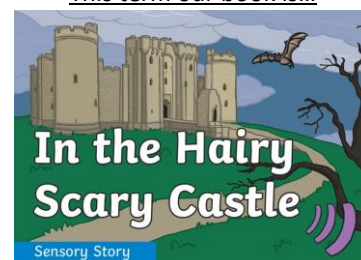


Catherine

## Welcome

Welcome back everyone, we hope you are all ready for our last few weeks of this academic year! This term we are welcoming Catherine to the Daffodil team! Catherine spent a couple of days with us at the end of last term, and we are very excited to have her on board. We have got an exciting final term planned!

## This term our book is...



## Curriculum

We will be continuing our topic around castles this term, but reading a new sensory story; 'In the Hairy Scary Castle'! We will be continuing to learn about adding adjectives into our writing.

In our Cognition and Learning Numeracy lessons, we are continuing our learning around time; the pupils have been making great progress in this lesson!

During our Cognition and Learning Science lessons, we will be continuing to look at properties and changes of materials; doing lots of fun experiments.

In our PSHE lessons this term, our focus is on feelings; as we learn how to recognise and manage our own emotions.

For P.E. this term, we will be stretching and relaxing in yoga, and also preparing for sports day.

## Whole School Diary Dates

23/06/2023	Cultural Day
28/06/2023	Summer Production
29/06/2023	Summer Production
03/07/2023	Sports Day 10 – 12
07/07/2023	Willoughby Summer Event
10/07/2023 – 17/07/2023	Pupil Transition weeks
19/07/2023	End of Term

Please send £1.50 a week or £9 for the term in a named envelope to cover the cost of ingredients for food lessons.

## Key Class information

- Friday 23<sup>rd</sup> June – Daffodil class summer trip
- Wednesday – P.E. – please send your child in with a spare t-shirt and shorts/joggers and trainers to change into.
- Thursday pm – Forest school – please send in appropriate clothing and footwear when it is your child's week.

## Keeping in touch

Please use the home school book to inform us of any important information relating to your child. We will check it every day but please log into Tapestry for your daily class update. Don't forget to add any home experiences to Tapestry as this provides us with a valuable link to home.

Any absence or to notify us of a medical appointment or for general enquiries please email:

[willoughbyenquiries@prioryacademies.co.uk](mailto:willoughbyenquiries@prioryacademies.co.uk)