

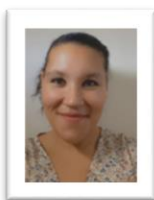
Foxglove Class

Term 1 Newsletter

2023-2024



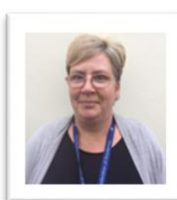
Foxglove Class Staff



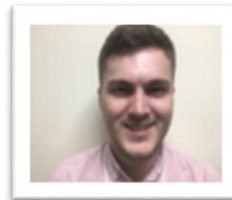
Nadine



Maureen



Michelle

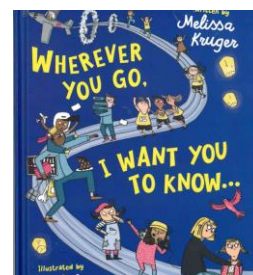


Owen

Welcome

A big hello and welcome back from team Foxglove. I am Nadine and I am so proud to be the teacher of Foxglove class. I am new to Willoughby so my main focus will be establishing relationships with your children and learning from the talented staff who have previously supported them. Your children have absolutely amazed me this week and I cannot wait to see what this year has in store!

This term our book is...



Curriculum

Numeracy – We will be exploring numbers. Firstly we will be learning to subitise before moving on to forming numbers and counting.

Literacy – We have started to share a beautiful book called 'Wherever you go, I want you to know.' We will be exploring our dreams and aspirations.

Science - We will be learning about humans and animals. We will be looking at the animals in our local area.

PSHE - We will be learning about ourselves and our families. Please send in some photos for us to share during these lessons.

We will continue to enjoy activities that help us to extend our attention skills and provide us with opportunities to show our creative side.

Whole School Diary Dates

Please send £1.50 a week or £10.50 for the term in a named envelope to cover the cost of ingredients for food lessons.

- Tuesday 3rd October – Pupil Photographs
- Tuesday 10th October – Wheelchair Clinic
- Monday 16th October – NHS Flu Vaccine
- Friday 20th October – End of Term
- Monday 23rd – Monday 27th October – Half Term
- Monday 30th October – Start of Term

Key Class information

Please send in any snacks/ drinks for your child.

Monday	Library & P.E
Tuesday	Performing arts and cookery
Wednesday	4D room & P.E
Thursday	Music
Friday	Art

Please ensure you send in clothing and footwear suitable for above activities.

Keeping in touch

Please continue to use the home school book or Tapestry to inform us of any important information relating to your child. We will check it every day but please log into Tapestry for your daily class update. Don't forget to add any home experiences to Tapestry as this provides us with a valuable link to home.

Any absence or to notify us of a medical appointment or for general enquiries please email: willoughbyenquiries@prioryacademies.co.uk