

## Cherry Tree Class

Autumn term 1 Newsletter

2024-2025



## Cherry Tree Class Staff



Katherine



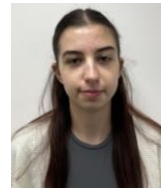
Nicola



Dawn



Jess



Lily

### Welcome

A huge welcome to Cherry Tree class, we have both new pupils and adults joining us this year. We hope we all settle quickly and enjoy all that Cherry Tree class has planned. We hope you are refreshed and ready for this next year of learning, fun and growth. We can't wait!

### This term our book is...



### Curriculum

Our theme this term is 'Marvellous Me' and we will be thinking about our senses. We have lots of resources to help us explore them. We will use symbols and our voices to ask for items, constructing sentences using colourful semantics and our AAC devices too. Intensive Interaction, Joint Attention and Attention Autism (Bucket) will be used to engage and encourage interactions and communication.

Our PSHE/life skills lessons will focus on looking after ourselves, learning to brush our teeth after lunch every day. We will also enjoy making toast, washing and drying up on a Friday afternoon; after visiting Tescos in the morning to buy any items we need. Using our communication skills in different environments is such an important life skill too.

### Whole School Diary Dates

01/10/24	School Photos
14/10/24	Parents' Evening
15/10/24	
18/10/24	End of Term
<b>Monday 28<sup>th</sup> October – Start of Term</b>	

Food and nutrition – Please log into your ParentPay account where a payment item has been raised and we would appreciate it if you could make a voluntary contribution.

### Key Class information

Please send in any snacks/ drinks for your child.

Monday	Spa
Tuesday	
Wednesday	
Thursday	Bourne Woods
Friday	Tescos

Please ensure you send in clothing and footwear suitable for above activities.

### Keeping in touch

Please continue to use the home school book or Tapestry to inform us of any important information relating to your child. We will check it every day but please log into Tapestry for your daily class update. Don't forget to add any home experiences to Tapestry as this provides us with a valuable link to home.

Any absence or to notify us of a medical appointment or for general enquiries please email: [willoughbyenquiries@prioryacademies.co.uk](mailto:willoughbyenquiries@prioryacademies.co.uk)